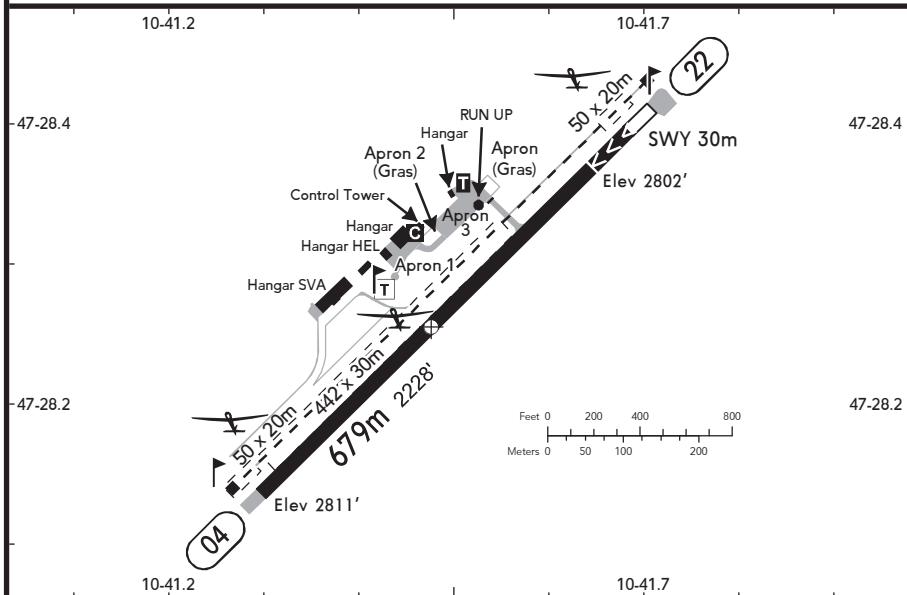


BRIEFING STRIP™

LOCATION Elev <b>2807'</b> /856m N47 28.3 E010 41.5	AFIS REUTTE FLUGPLATZ <b>122.400</b> <sup>(1)</sup> (ge, en)	ADMITTED AIRCRAFT 
---	---	-----------------------

<sup>(1)</sup> 25 NM / 3000' AAL, en O/R



SCALE 1:10000

RWY No	Dimension (m) - Surface	TORA (m)	LDA (m)	Strength	Lights
04 (043°) 22 (223°)	679 x 18 Asphalt	621 679	679 621	2.8t MTOW (5.7t PPR)	---

**1** TORA/LDA up to 752m with PPR OPR.

**NOTE:** AD PPR. No gyrocopter and no trikes.

During foehn expect turbulence, horizontal wind shear and severe downdrafts especially on short final to RWY 22.

ACFT with radio: Contact REUTTE FLUGPLATZ at latest overhead REP.

At REP H there is no contact with AD radio; report blind to alert other traffic.

Keep MNM/MAX altitudes prescribed for REP except there is other information by radio.

Enter traffic circuit as depicted.

Pay attention to ARR/DEP from/to heliport BKH Bezirkskrankenhaus and GLD winch activities.

Overflying AD below 5500' prohibited.

Look out for GLD and avoid GLD flying area SE of AD.

Avoid overflying residential areas and climb along river Lech to assigned ALT but MNM 4000' before acceleration.

Climb to 4000' with MAX rate for noise abatement.

Due to noise prevention preferred direction for TKOF RWY 22 / for LDG RWY 04.

If possible perform direct APP/DEP from/to W to avoid

noise while flying around the city.

When reaching minimum safe altitude to cross the trees along the RWY after lift off turn towards River Lech away from houses near RWY end 04 and perform further DEP based on center of River Lech. The same applies for DEP 22: after lift off turn towards River Lech on discretion of PIC as described above.

**CAUTION:** OBST in DEP area RWY 04. On discretion of pilot in command avoid overflying the houses after TKOF.

GLD cross the NE part of the traffic circuit. Show LDG lights during ARR and DEP procedures.

High-tension line 800m in front of THR 04 and parallel to RWY.

Forest between river Lech and AD with a length of 860m and a width of 35m along the RWY safety strip, height up to 70' above the lateral AD safety area.